

68 0 / A MODULAR TICKET BOOTH

(6' x 8' ACTUAL SIZE)

NORTH CAROLINA DESIGN CODES

2003 INTERNATIONAL BUILDING CODE W/ N.C. AMENDMENTS
 2003 INTERNATIONAL MECHANICAL CODE W/ N.C. AMENDMENTS
 2003 INTERNATIONAL PLUMBING CODE W/ N.C. AMENDMENTS
 2005 NATIONAL ELECTRICAL CODE W/ N.C. AMENDMENTS

DESIGN LIVE LOADS

FLOOR:..... 50 PSF LIVE LOAD
 10 PSF DEAD LOAD

ROOF:..... 30 PSF LIVE LOAD
 10 PSF DEAD LOAD

CONSTRUCTION TYPE:..... 5B
 OCCUPANCY/USE GROUP: B
 BUILDING AREA:..... 48 SQ FT.
 MINIMUM BUILDING
 SET BACK:..... GREATER THAN 10 FEET TO A
 COMMON OR ASSUMED PROPERTY LINE

SEISMIC ZONE:..... GROUP I, CATEGORY C
 MAXIMUM WIND LOAD:..... 90 MPH, EXPOSURE C
 OCCUPANT LOAD:..... 1

DRAWING INDEX

DRAWING NUMBER	DESCRIPTION
#1	SPECIFICATIONS
#2	ELEVATIONS
#3	FLOOR / ELECTRICAL PLAN
#4	CROSS SECTION / BLOCKING POINTS PLAN

SPECIAL LIMITATIONS:

ADEQUATE HANDICAPPED RESTROOM FACILITIES TO HANDLE THE ADDITIONAL OCCUPANT LOAD CREATED BY THE ADDITION OF THIS BUILDING TO A SITE SHALL BE PROVIDED IN AN ADJACENT BUILDING ON THE SAME PROPERTY. THE LOCAL OFFICIAL HAVING JURISDICTION SHALL VERIFY THE EXISTING FACILITIES.

BUYERS ACCEPTANCE SIGN AND DATE:

CONTACT INFO:
 TWIN MODULAR SERVICES INC.
 1001 LOWER LANDING ROAD
 SUITE 607
 BLACKWOOD, NJ 08012

TITLE: COVER SHEET	DATE: 1/11/08	JOB NO: 2008-010
MODEL: 68 0/A TICKET BOOTH	SCALE: NTS	DRAWING NO: CVR
DRAWN BY: R.M.		
REV:		
TWIN MODULAR SERVICES, INC. 1001 LOWER LANDING RD, SUITE 607, BLACKWOOD, NJ 08012		

NOT ACCEPTED

CHASSIS

TYPE: PERIMETER

MAIN BEAM: 6" "C" CHANNEL 8.2 LBS PER FT

CROSS MEMBERS: 6" "C" CHANNEL 8.2 LBS PER F

PAINT: ASPHALT BASED

FLOOR

INSULATION: NONE

DECKING: 3/4" PLYWOOD, 24 O.C. SECURED DIRECTLY TO STEEL FRAME

OPTIONAL: 1/4" STEEL PLATE FLOOR W/ NON-SKID EPOXY PAINT

COVERING: 1/8"x12"x12" VINYL TILE

TRIM: 4" VINYL COVE BASE

MOISTURE BARRIER: TYVEK OR EQUAL

EXTERIOR WALLS

STUDS: 2"x4" STUD GRADE SPF @ 16" O.C.

BOTTOM PLATE: SINGLE 2"x4" #3 SPF

TOP PLATE SINGLE 2"x4" #3 SPF

WALL HEIGHT: 8'-3"

FINISHED CEILING HT: 7'-8" A.F.F.

INSULATION: R-13 FIBERGLASS KRAFT-BACKED BATTS

INT. WALL COVERING: 1/8" VINYL COVERED PANEL (CLASS III)

ROOF

TYPE: RAFTER, 2x6 #2 SPF @ 16" O.C. W/ 12" OVERHANG (TICKET WINDOW SIDE ONLY)

CEILING: 2'x4' T-GRID DROP CEILING @ 7'-8" A.F.F.

INSULATION: R-13 KRAFT FACED FIBERGLASS BATTS

ELECTRICAL

MAIN DISTRIBUTION PANEL: EXTERIOR (WEATHERPROOF) 100 AMP 120/240 VOLT SINGLE PHASE, 3 WIRE, 60 HZ. WITH GROUND

RACEWAY: MINIMUM #14/2, 90 DEG. C. TYPE MC, COPPER

INTERIOR LIGHTS: 2'x4' TWO TUBE LAY-IN FLUORESCENT TROFFER PER PRINT

EXTERIOR LIGHTS: 150 WATT QUARTZ HALOGEN SECURITY LIGHT (WEATHERPROOF)

SWITCHES: 120 V. 15 AMP SINGLE POLE PER PRINT

RECEPTACLES: 120 V. 15 AMP DUPLEX RECEPTS PER PRINT

H.V.A.C.

HEATING: 220V, 20 AMP, 6' ELEC. BASEBOARD HEATER, DEDICATED CIRCUIT

AIR CONDITIONING: 110V, 6500 BTU WALL MOUNT, DEDICATED CIRCUIT

OPTION: 11600 BTU AIR CONTIONING / HEAT COMBO UNIT, WALL MOUNTED

EXTERIOR WINDOWS & DOORS

DOORS: 36"x80" ALUM. DOOR, ALUM. FRAME, FOAM INSULATED W/ 14"x14" S.G., LEVER PASSAGE HARDWARE

OPTION: 36"x80" STEEL DOOR W/ 22"x30" WINDOW (S.G.), CLOSER

WINDOWS: 24"x36" CLEAR TEMPERED GLASS TICKET WINDOW WITH STAINLESS STEEL SHELF, SPEAK-THRU & 1/2 ROUND TICKET SERVICE

OPTION: (3) 36"x39" HORIZONTAL SLIDER, VINYL THERMAL INSULATED WINDOWS

EXTERIOR FINISHES

SIDING: .019 ALUMINUM STANDARD COLOR - LITE GRAY

TRIM: .019 ALUMINUM STANDARD COLOR DARK GRAY

WALL SHEATHING: 7/16" OSB OR CDX PLYWOOD, 16/0 SPAN INDEX RATING

ROOF SHEATHING: 1/2" CDX PLYWOOD, 16/0 SPAN RATING

ROOF: .45 EPDM RUBBER ROOFING

FURNISHINGS

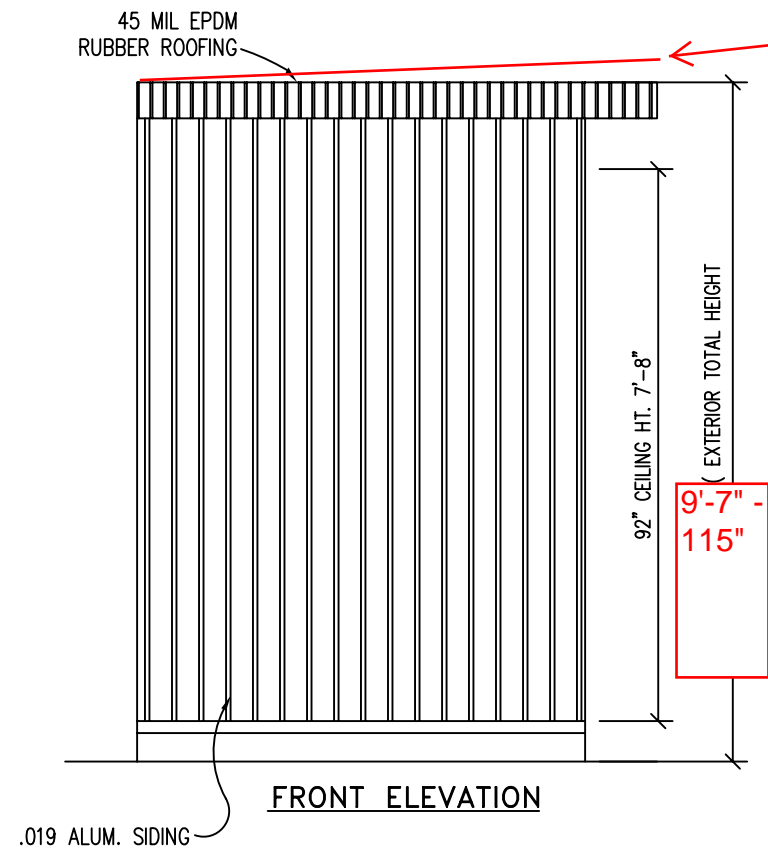
COUNTER TOP - WHITE MICA

BUYERS ACCEPTANCE SIGN AND DATE:

Empty box for buyer acceptance sign and date.

CONTACT INFO:
TWIN MODULAR SERVICES INC.
1001 LOWER LANDING ROAD
SUITE 607
BLACKWOOD, NJ 08012

TITLE: SPECIFICATIONS	DATE: 1/11/08	JOB NO: 2008-010
MODEL: 68 O/A TICKET BOOTH	SCALE: NTS	DRAWING NO: 1
TWIN MODULAR SERVICES, INC. 1001 LOWER LANDING RD, SUITE 607, BLACKWOOD, NJ 08012		
DRAWN BY: R.M.		
REV:		

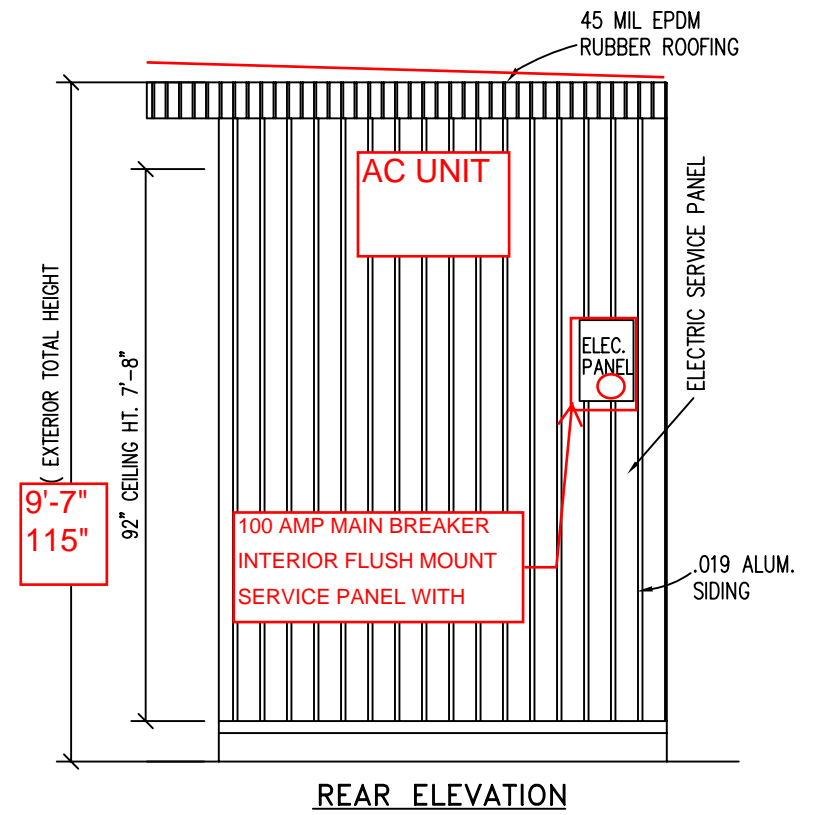


ROOF PITCHED
1/4" TO 1'

9'-7" -
115"

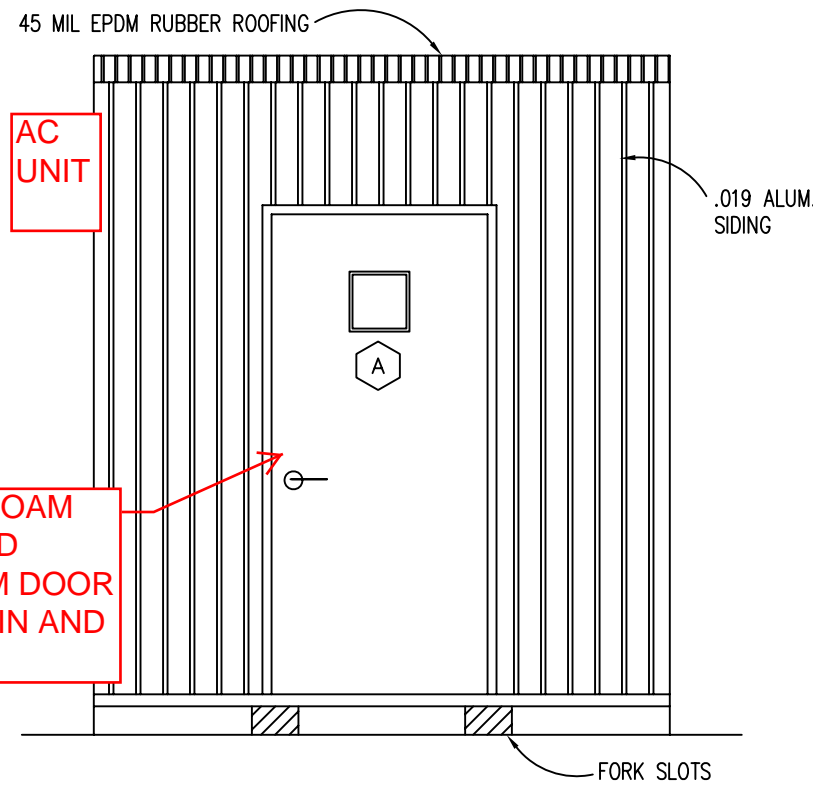
FRONT ELEVATION

.019 ALUM. SIDING



9'-7" -
115"

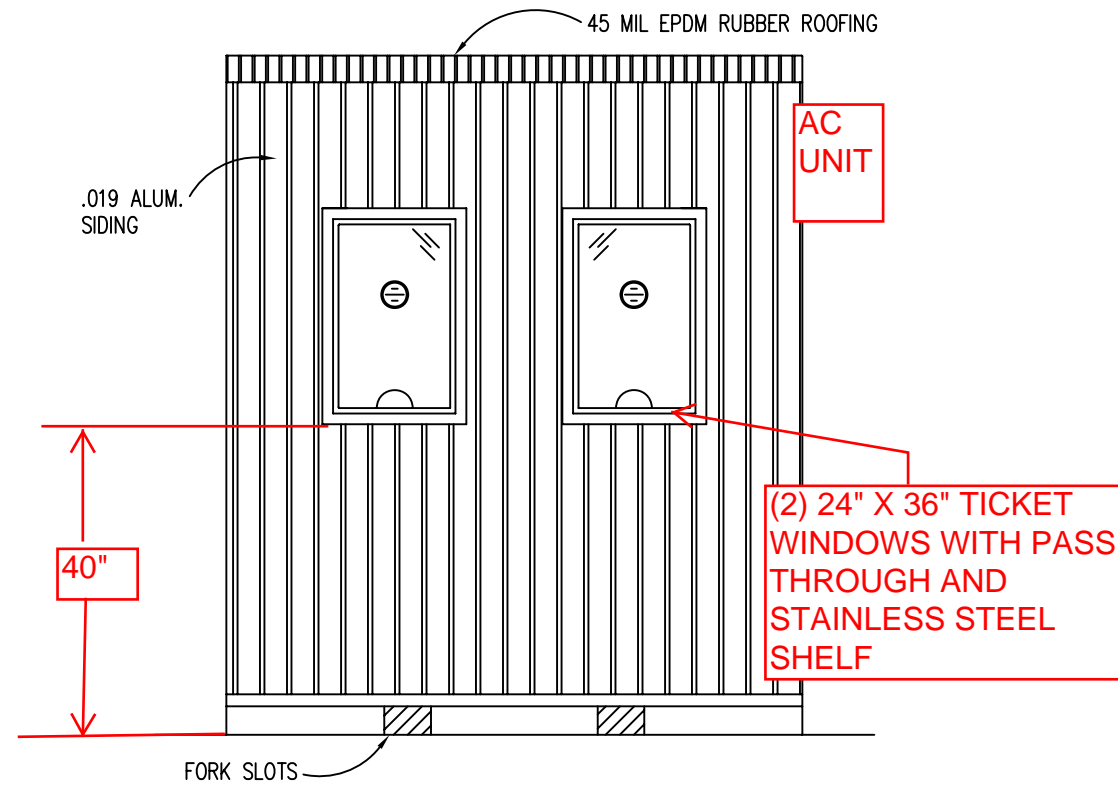
REAR ELEVATION



36" X 80" FOAM
INSULATED
ALUMINUM DOOR
WITH CHAIN AND
LOCKSET

CURB SIDE ELEVATION

FORK SLOTS



40"

(2) 24" X 36" TICKET
WINDOWS WITH PASS
THROUGH AND
STAINLESS STEEL
SHELF

ROAD SIDE ELEVATION

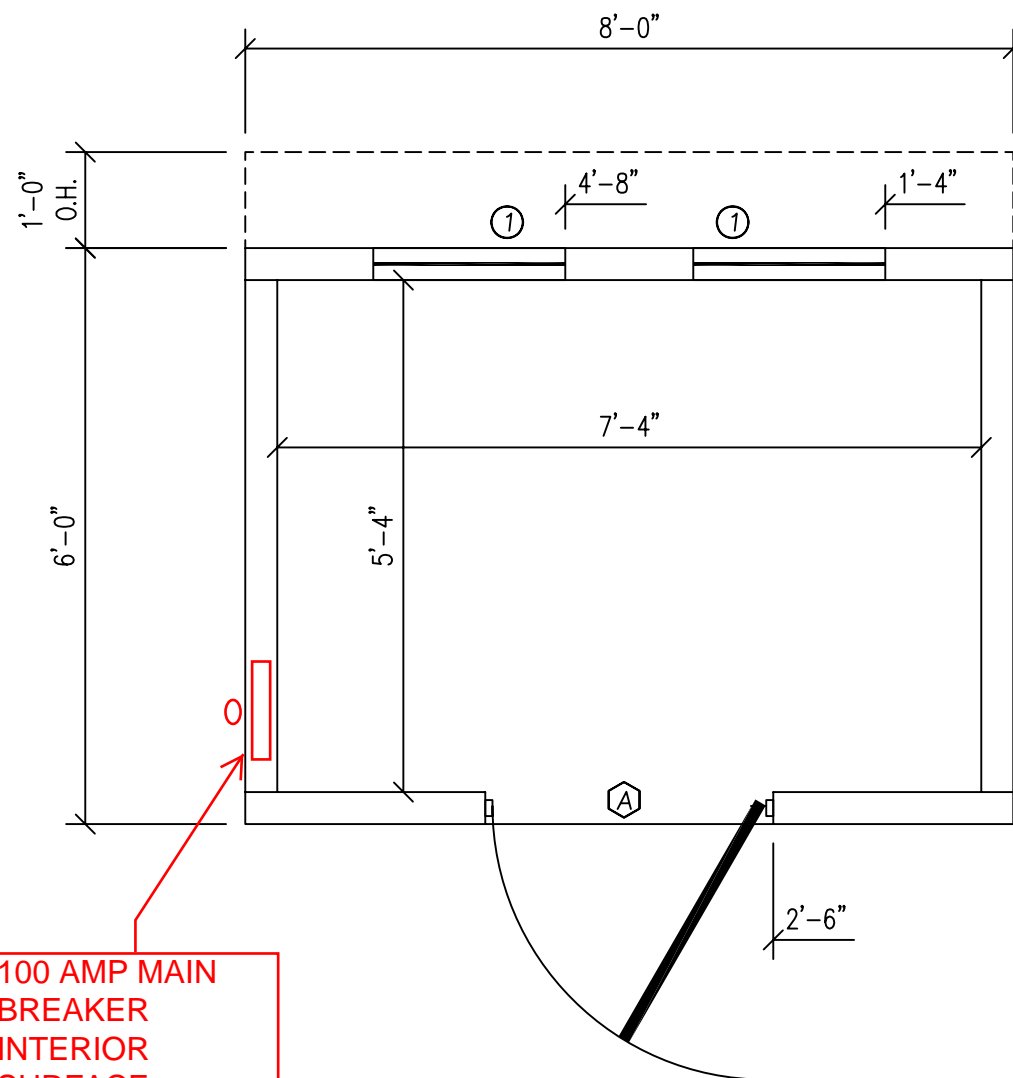
.019 ALUM.
SIDING

FORK SLOTS

CONTACT INFO:
TWIN MODULAR SERVICES INC.
1001 LOWER LANDING ROAD
SUITE 607
BLACKWOOD, NJ 08012

BUYERS ACCEPTANCE SIGN AND DATE:

TITLE: ELEVATIONS	DATE: 1/11/08	JOB NO: 2008-010
MODEL: 68 O/A TICKET BOOTH	SCALE: 3/8"=1'-0"	DRAWING NO: 2
DRAWN BY: R.M.		
REV:		
TWIN MODULAR SERVICES, INC.		
1001 LOWER LANDING RD, SUITE 607, BLACKWOOD, NJ 08012		



FLOOR PLAN

100 AMP MAIN BREAKER INTERIOR SURFACE MOUNT SERVICE PANEL WITH 1-1/2" CONDUIT TO EXTERIOR

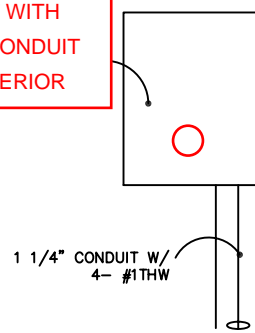
DOOR AND WINDOW SCHEDULE

- Ⓐ 36"x80" ALUM. DOOR, ALUM. FRAME, FOAM INSULATED W/ 14"x14" WINDOW (SAFETY GLAZED), LEVER HARDWARE
- ① 24"x36" CLEAR TEMPERED GLASS TICKET WINDOW WITH STAINLESS STEEL SHELF, SPEAK-THRU & 1/2 ROUND TICKET SERVICE

BUYERS ACCEPTANCE SIGN AND DATE:

AMPACITIES OF INSULATED CONDUCTORS 90°C WIRE COPPER	
AWG	MAXIMUM AMPACITY
14	15 AMP
12	20 AMP
10	30 AMP
8	50 AMP
6	65 AMP
4	85 AMP
3	100 AMP
2	115 AMP
1	130 AMP

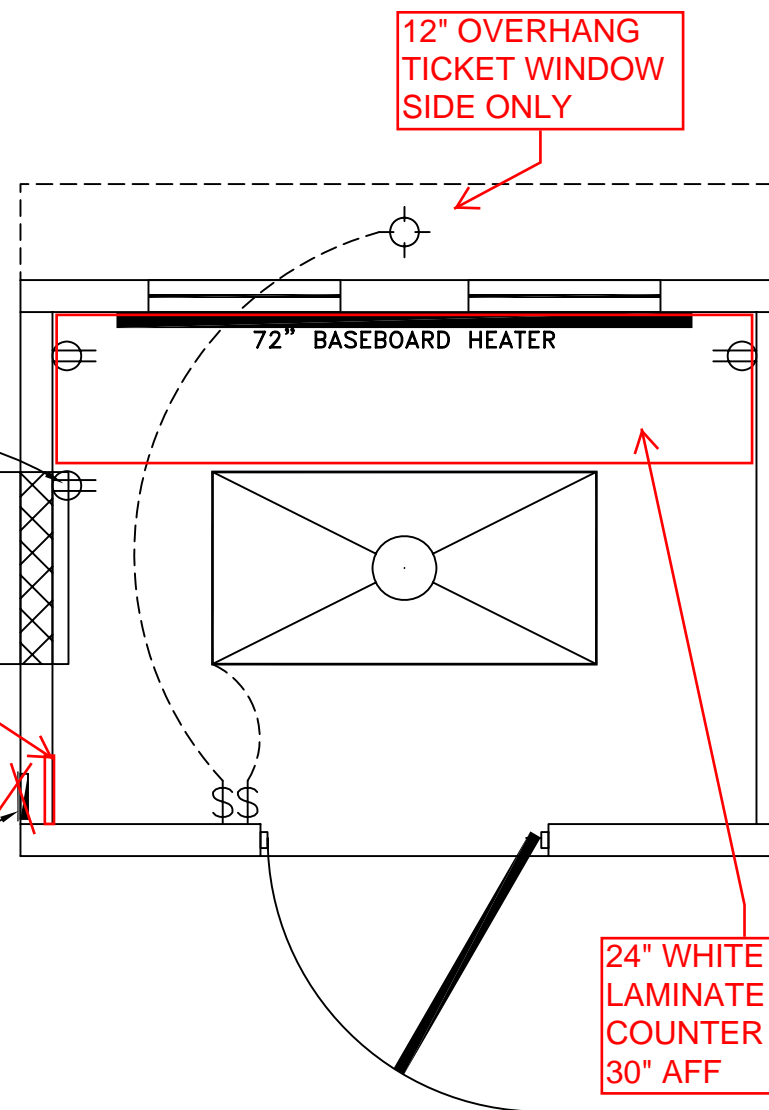
INTERIOR FLUSH MOUNT WITH 1-1/2" CONDUIT TO EXTERIOR



TYP. 100 AMP ELECTRICAL RISER DIAGRAM
N.T.S.

DEDICATED RECEPT FOR A/C

100 AMP MAIN BREAKER INTERIOR FLUSH MOUNT SERVICE PANEL WITH 1-1/2" CONDUIT TO EXTERIOR



ELECTRICAL PLAN

24" WHITE LAMINATE COUNTER TOP 30" AFF

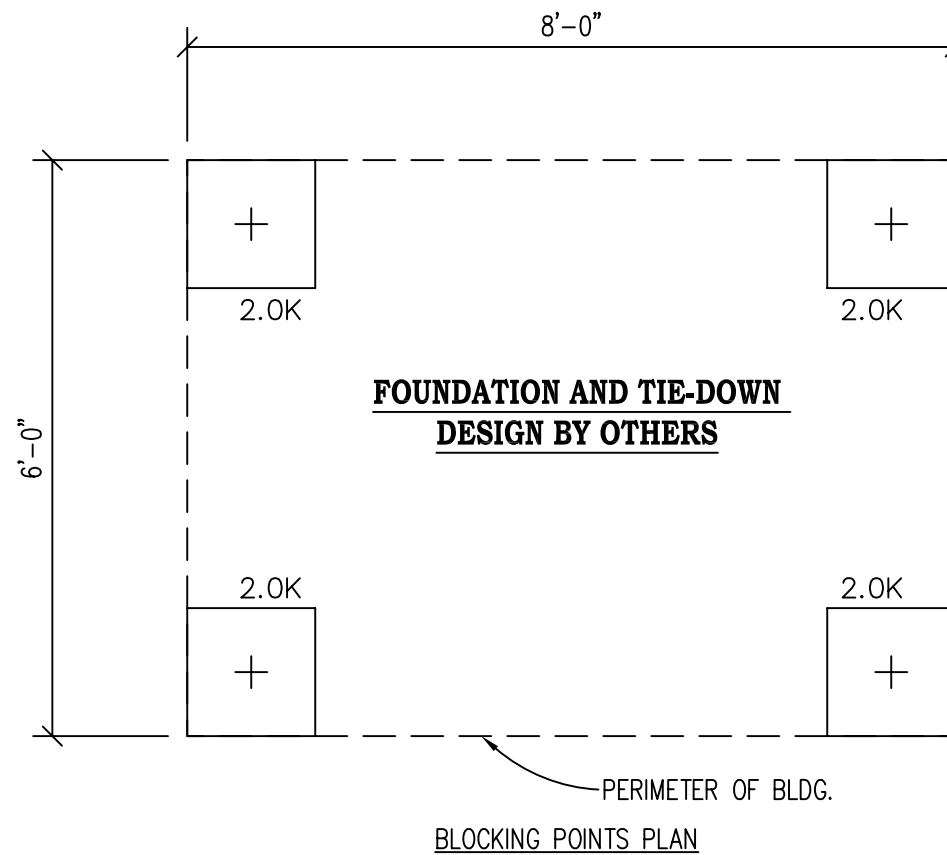
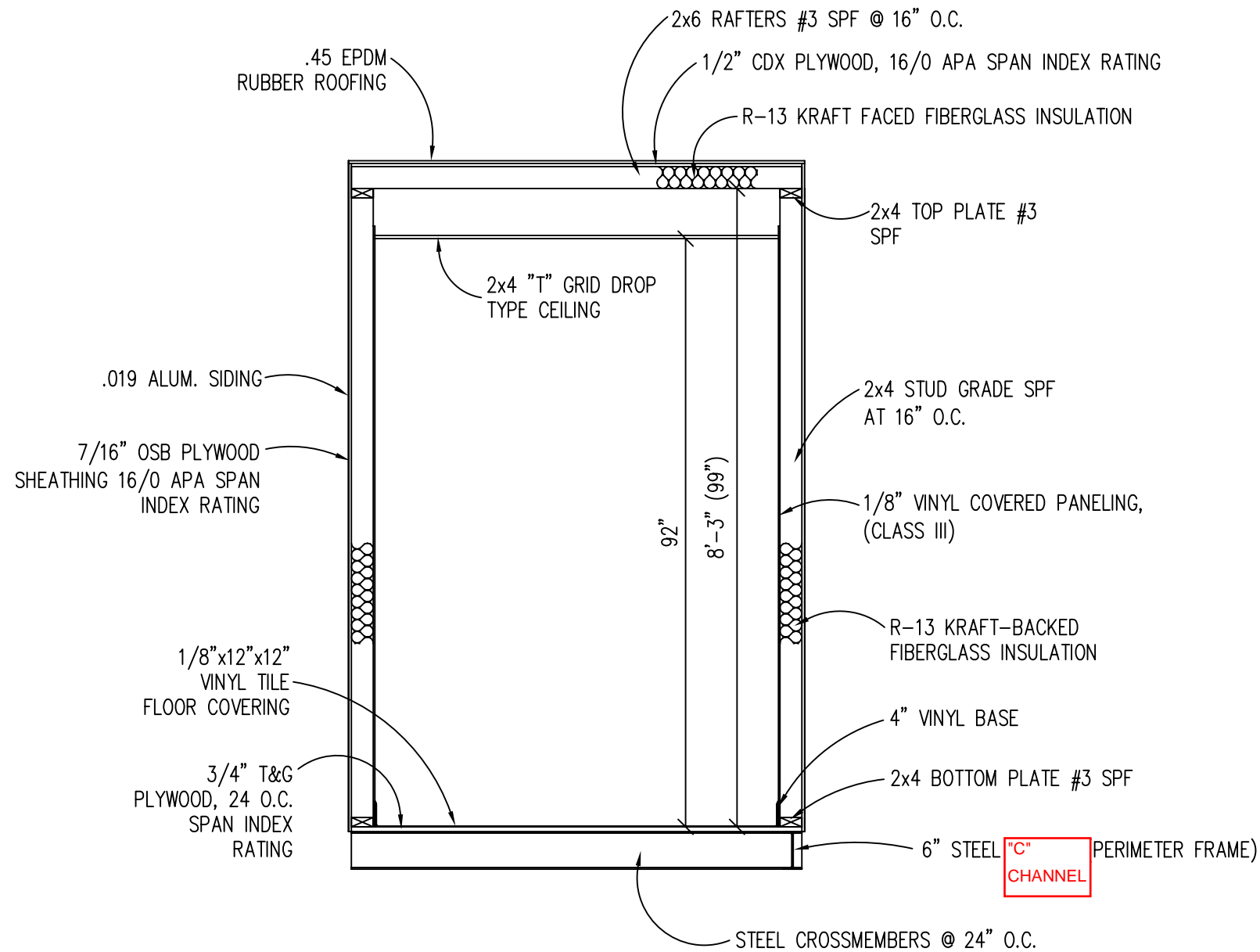
12" OVERHANG TICKET WINDOW SIDE ONLY

ELECTRICAL

1. ALL RECEPTACLES TO BE GROUNDING TYPE.
2. ALL WIRING TO BE PER THE EDITION OF THE NEC LISTED ON THE COVER PAGE, TYPE MC (CU) W/ GROUND.
3. MAIN PANEL TO BE MARKED "SUITABLE FOR USE AS SERVICE EQUIPMENT", AND BE EQUIPPED W/ BREAKER/FUSE TYPE OVERCURRENT PROTECTION.
4. PROPER THERMAL OVERLOAD PROTECTION TO BE PROVIDED FOR ALL MOTORS.
5. DISCONNECTING MEANS WITHIN SIGHT REQUIRED FOR ALL MOTORS.
6. WEATHERPROOF PROTECTION REQUIRED FOR ALL OUTDOOR LIGHTS, RECEPTACLES AND DISCONNECTS.
7. PROPER WORKING CLEARANCES TO BE PROVIDED AND MAINTAINED ABOUT ALL ELECTRICAL EQUIPMENT.
8. ALL FLUORESCENT FIXTURES REQUIRE THERMAL PROTECTION AND PROPER CLEARANCES FROM INSULATION, ALSO APPLICABLE FOR INCANDESCENT FIXTURES.
9. COMBINATION EXHAUST FAN/LIGHT AND ALL RECESSED INCANDESCENT FIXTURES TO BE WITH THERMAL PROTECTION.
10. EXIT LIGHTS (IF ELECTRIC) MUST BE FED FROM AN APPROVED EMERGENCY SERVICE CONNECTED AHEAD OF, BUT NOT WITHIN MAIN SERVICE DISCONNECTION MEANS ENCLOSURE, AND INSTALLED AS PER SERVICE REQUIREMENTS, OR BE BATTERY BACKUP TYPE UNITS.
11. SERVICE CONDUCTORS, LOCATED WITHIN THE PERIMETER OF THE BUILDING, SHALL BE INSTALLED IN ACCORDANCE WITH ARTICLE 230-6, PER THE EDITION OF THE NEC LISTED ON THE COVER PAGE.
12. MAXIMUM 15 (2) TUBE FLOURESCENT LIGHTS ON 15A CIRCUIT, MAXIMUM 10 RECEPTS ON 15A CIRCUIT, MAXIMUM 7 (4) TUBE FLOURESCENT LIGHTS ON 15A CIRCUIT.
13. MAXIMUM 20 (2) TUBE FLOURESCENT LIGHTS ON 20A CIRCUIT, MAXIMUM 13 RECEPTS ON 20A CIRCUIT, MAXIMUM 10 (4) TUBE FLOURESCENT LIGHTS ON 20A CIRCUIT.

ELECTRICAL LEGEND

- 2'x4' DROP-IN FLUORESCENT LIGHT
- 100AMP, EXTERIOR, 120/240V MAIN PANEL, WEATHERPROOF
- 15A 110V SINGLE POLE TOGGLE SWITCH +48"
- 15A 120V DUPLEX RECEPTACLE (RECEPTS AT +18" UNLESS NOTED)
- 150 WATT HALOGEN SECURITY LIGHT IN OVER HANG
- 72" BASEBOARD HEATER



DESIGN LOADS

FLOOR LIVE LOAD	= 50 PSF
FLOOR DEAD LOAD	= 10 PSF
ROOF LIVE LOAD	= 30 PSF
ROOF DEAD LOAD	= 10 PSF
EXTERIOR WALL DEAD LOAD	= 42 PLF

FOUNDATION LEGEND

+	INDICATES BLOCKING TO BOTTOM OF MAIN I-BEAM
↑	INDICATES MINUTE-MAN OR EQUAL FRAME TIE-DOWN LOCATION AND DIRECTION

FOUNDATION

1. THE PIER LOCATIONS SHOWN ON THIS PLAN ARE FOR THE PURPOSE OF IDENTIFYING THE LOCATION OF THE REQUIRED BLOCKING POINTS AND THE LOADS APPLIED AT EACH POINT FOR THIS BUILDING. FOUNDATION REQUIREMENTS ARE NOT KNOWN DUE TO VARYING SOIL CONDITIONS.
2. FOUNDATION DESIGN IS BY OTHERS. FOUNDATION REVIEW AND APPROVAL IS TO BE PERFORMED BY THE LOCAL OFFICIAL HAVING JURISDICTION.
3. CRAWL SPACE TO BE VENTILATED AT 1 SQ. FT. PER EACH 150 SQ. FT. OF CRAWL SPACE AREA TO BE VENTILATED.
4. PROVIDE POSITIVE DRAINAGE UNDER UNIT.
5. PROVIDE MINIMUM CRAWL SPACE ACCESS OF 22" x 24".

CONTACT INFO:
 TWIN MODULAR SERVICES INC.
 1001 LOWER LANDING ROAD
 SUITE 607
 BLACKWOOD, NJ 08012

BUILDING CODE

1. ATTIC VENTILATION SHALL NOT BE LESS THAN 1/150th OF THE HORIZONTAL AREA TO BE VENTILATED.
2. THE BUILDING EXTERIOR AND ALL FACILITIES WITHIN THE BUILDING SHALL BE IDENTIFIED WITH THE INTERNATIONAL SYMBOL OF ACCESSIBILITY.
3. CUSTOMER/BUYER SHALL BE RESPONSIBLE FOR ON SITE BARRIER FREE PROVISIONS: STEPS, RAMPS, PARKING SIGNS, ETC. - BUILDING APPROACH (WALK OR RAMP) WITH A MINIMUM WIDTH OF 5' AND A GRADIENT OF NOT MORE THAN 1 FOOT IN 20 FEET.
4. ALL LOCKS TO BE UNLOCKABLE FROM THE INTERIOR WITHOUT THE USE OF A KEY OR SPECIAL KNOWLEDGE.
5. CORROSION RESISTANT FLASHING AT TOP AND SIDES OF DOORS, WINDOWS AND AT ROOF PENETRATIONS.
6. ALL GLAZING WITHIN 24" OF EXTERIOR PASSAGE DOORS AND IN PASSAGE DOORS, OR WITHIN 18" OF FLOOR TO BE "SAFETY GLAZED" AND SO MARKED.

TITLE: BLOCKING POINTS PLAN CROSS SECTION MODEL: 68 0/A TICKET BOOTH	DRAWN BY: R.M. REV:	DATE: 1/11/08 SCALE: 1/4"=1'-0"	JOB NO: 2008-010 DRAWING NO: 4
TWIN MODULAR SERVICES, INC. 1001 LOWER LANDING RD, SUITE 607, BLACKWOOD, NJ 08012			